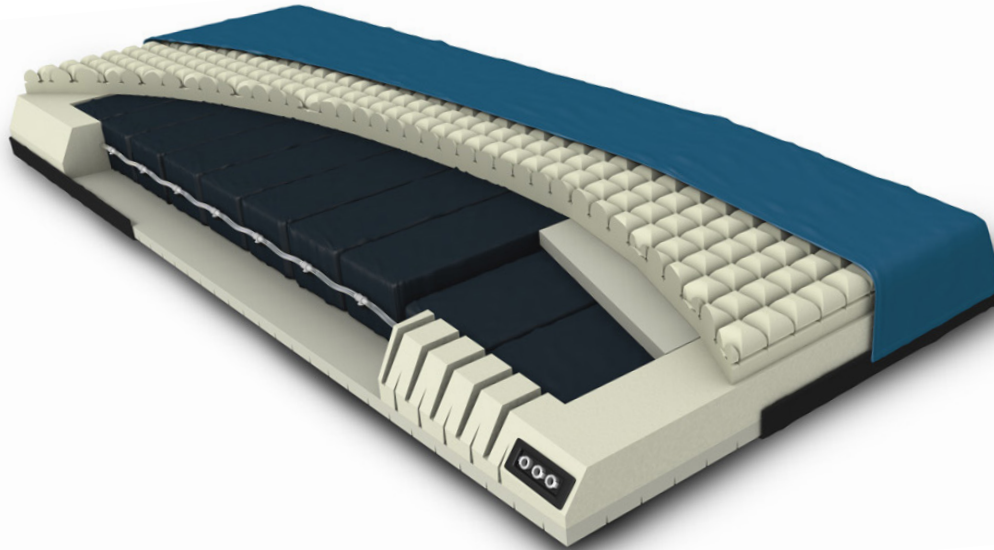


Protevo™ GTE+ MCM

Convertible alternating pressure with microclimate management



Protevo GTE+ Microclimate is an advanced pressure redistribution mattress that provides flexible therapy to help you meet the wound care needs of your patient. Used without a control unit, Protevo GTE+ provides pressure redistribution through an open, self adjusting air cylinder system. Easily convert the surface with an optional control unit to provide microclimate management and alternating pressure.



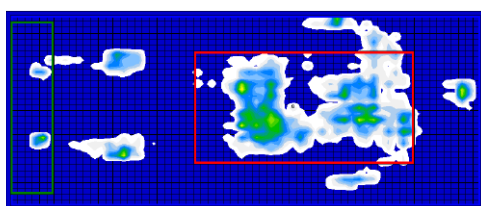
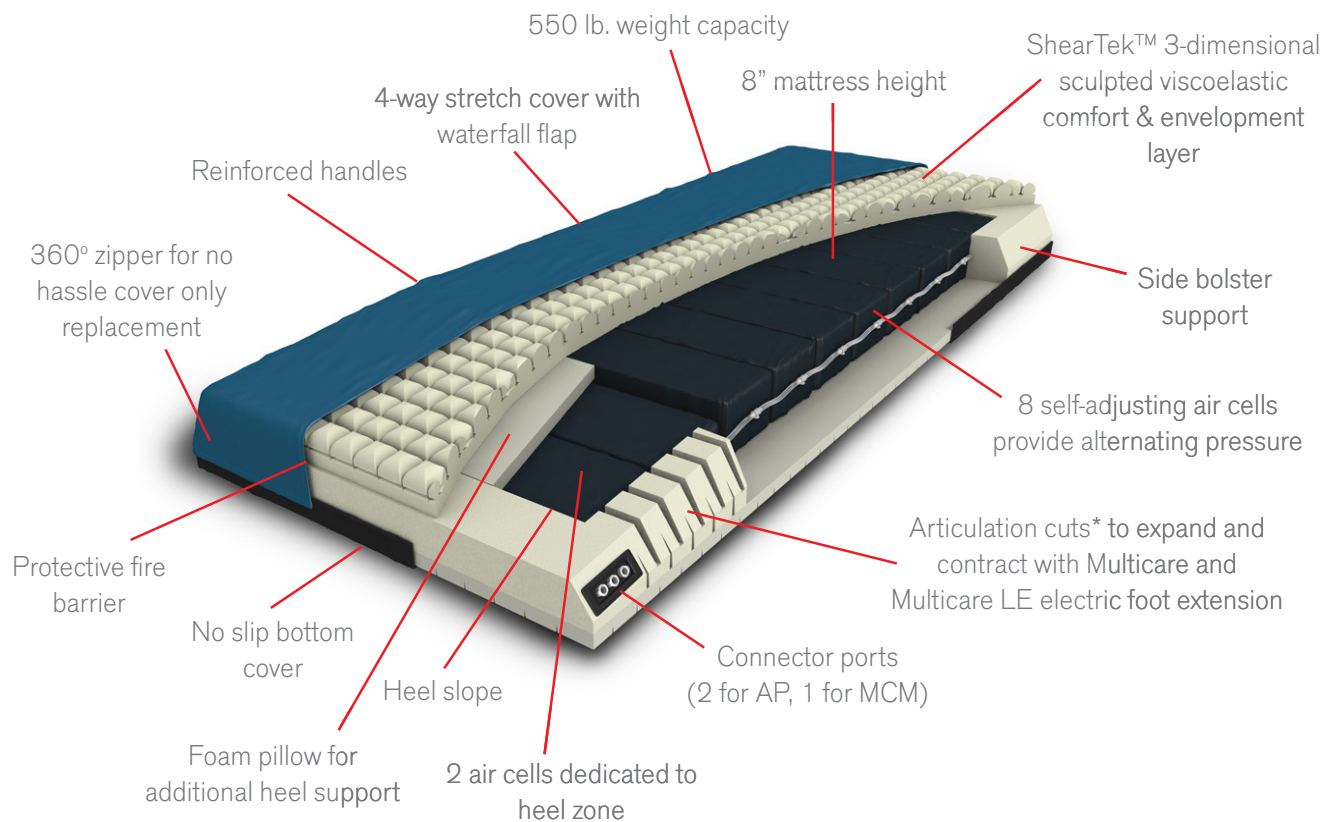
protevo™ GTE

** Also available without Microclimate Management.

protevo™ GTE+ microclimate

- Advanced pressure redistribution mattress can be used with or without power
- Indicated for prevention and treatment of pressure injuries through Stage IV
- Open air system with self-adjusting air cells
- 4-way stretch cover and 3-dimensional sculpted envelopment layer provide optimal patient comfort
- 10 self adjusting air cells provide optimal pressure redistribution with dedicated air cells for the heels
- Accommodates patients weighing up to 550 lbs.
- Optional control unit provides microclimate management and alternating pressure with quiet operation - no noisy, constant adjustments of an all air mattress system

AT A GLANCE



Male | 200 lbs | Supine | LINET Multicare Bed | Vista High Resolution FSA

50
47.6
45.1
42.7
40.2
37.6
35.0
32.5
30.0
27.5
25.0
22.5
20.0
17.5
15.0
12.5
10.0
7.5
5.0
2.5
1
mmHg

Sensing Area (in ²)	505.46	11.23	365.05
Coefficient of Variation (%)	83.70	76.08	80.63
Average Pressure (mmHg)	8.79	11.51	9.24
Maximum Pressure (mmHg)	36.48	32.17	36.48
Regional Distribution (%)	100.00	2.91	75.89

TECHNICAL PARAMETERS

Mattress		Flammability**	Cal 117, Cal TB 129, CPSC 16CFR1633, Boston 1X-11
L x W x D (flat deck)	84 x 35 x 8 in.		
L x W x D (Multicare)	85.5 x 35 x 8 in.	Optional Control Unit	
Weight	26.5 lbs.	Airflow	10 lt./min.
Therapeutic Weight Limit	550 lbs.	AP Cycle Time	12 min.
MVTR	500 g/m ² /24h	Noise Level	35 dBA

* Articulation cuts only available on the Multicare and Multicare LE bed versions. **Protevo GTE+ meets or exceeds noted fire code standards.